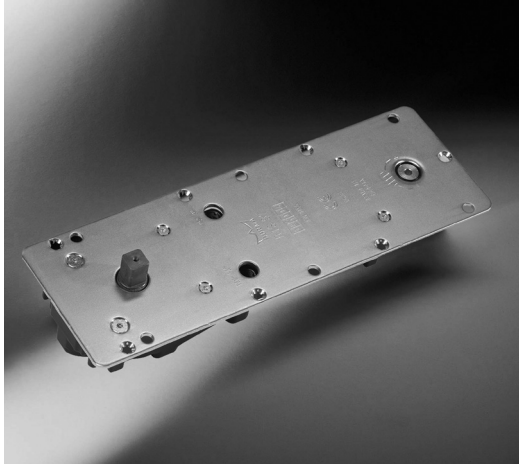


**RTS 87**

**DOOR CLOSER**

# RTS 87 TIMBER TRANSOM CLOSER



## Concealed Transom Closer

The RTS87 Transom Closer is a power adjustable unit size EN1 to EN4 that allows fine on site tuning of the closing force to ensure full and correct closure of the door whilst ensuring opening forces are kept to a minimum allowing compliance with Approved Document M and BS8300. With positive Centering through its Cam Mechanism fine adjustment of the neutral position can also be made with the drive arm fitted within the door leaf ensuring correct door alignment and performance.

## Product Features

- Closer is concealed within the door frame
- Maximum door width 1100mm
- Suitable for single and double action doors
- Adjustable power size and mechanical backcheck
- Variants available for timber and profile frames
- CERTIFIRE Approved for peace of mind

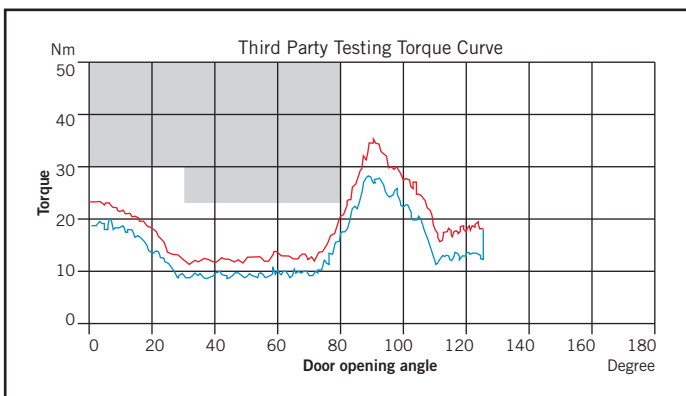


Certifire Approved CF127 for timber fire doors for 1 Hour.  
RTS87 Opening Forces adjusted to EN3 (minimum for fire door)

Typical Door Sizes (mm)				
826	850	875	900	926



Minimum achievable door width at EN3 = 800 mm



## Data and Features

EN Power Size	EN 1-4	
Maximum Door Width	< 1100 mm	
Adjustable Power Size	✓	
Independant Valve Adjustable Closing Speed 175° - 15°	✓	
Independant Valve Adjustable Latch Speed 15° - 0°	✓	
Mechanical Backcheck	✓	
Double Action and Single Action Doors	✓	
Universal Non Handed Unit	✓	
Minimum door width where unit will exert 30N opening force when adjusted to EN3 (min. for fire doors)	800mm	
Fixing Plate Dimensions (& body) in mm	Length	321 (300)
	Width	108 (72)
	Height	55
Weight in kg	5.2	
Door Closer tested to BS EN1154	✓	
CE Marked	✓	
Certifire Approved	✓	

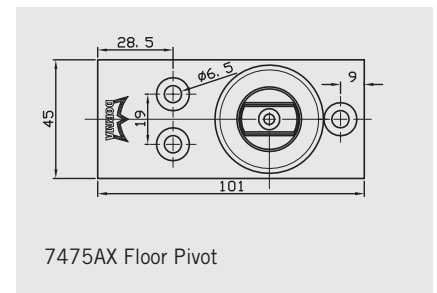
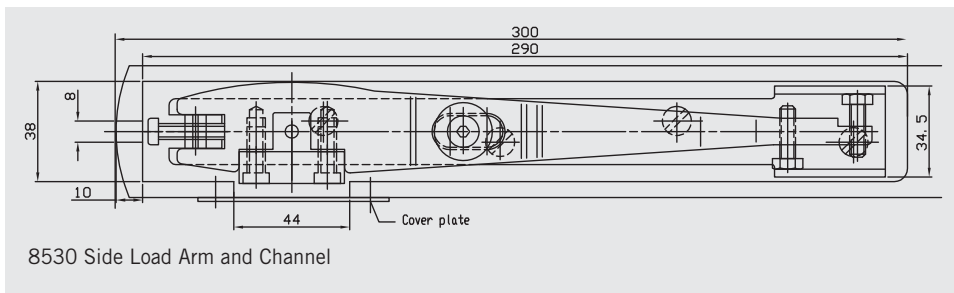
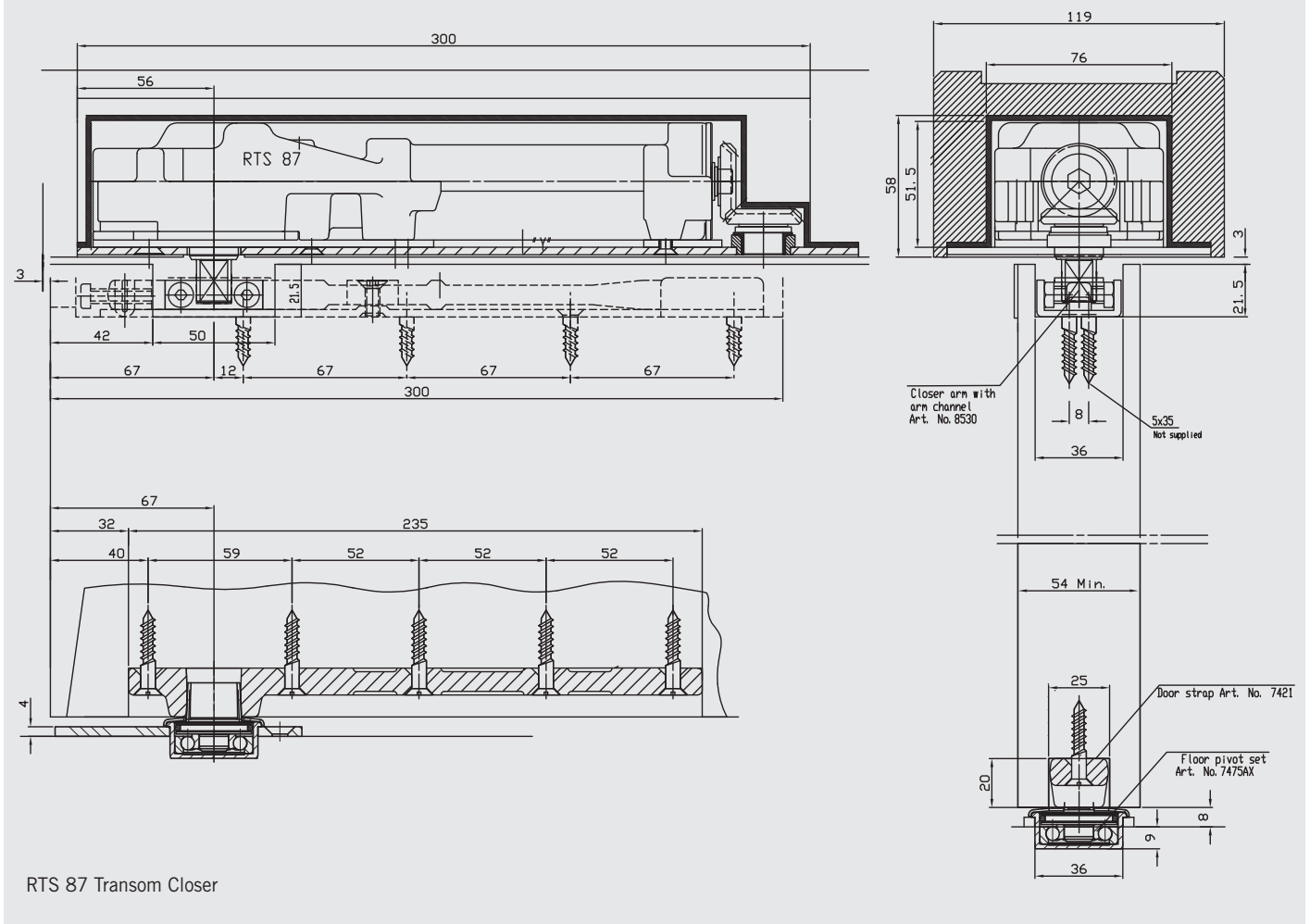
## BJ Waller Part Numbers

BJ Waller Part Number	Finish	Description
2.010411	Stainless Steel	RTS87 Timber Transom Closer, Complete With Cover Plate. *

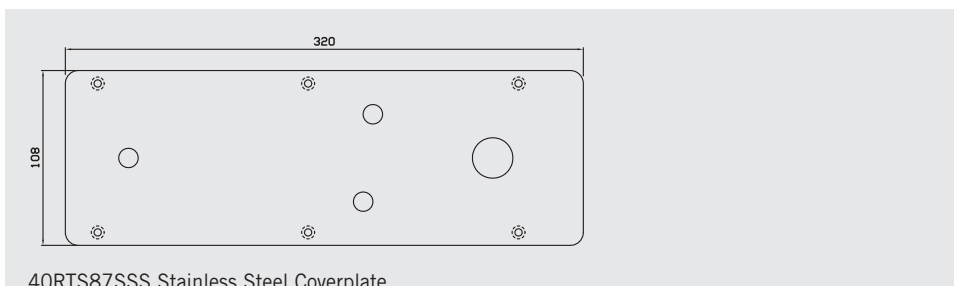
\*Set Consists of: RTS87 EN 1-4 Mechanism, 8530 Side Load Arm, Double Action Strap, RTS87 Intumescent Pack, 7471AX Floor Pivot, Stainless Steel Coverplate

# RTS 87 TIMBER TRANSOM CLOSER

## Typical Applications

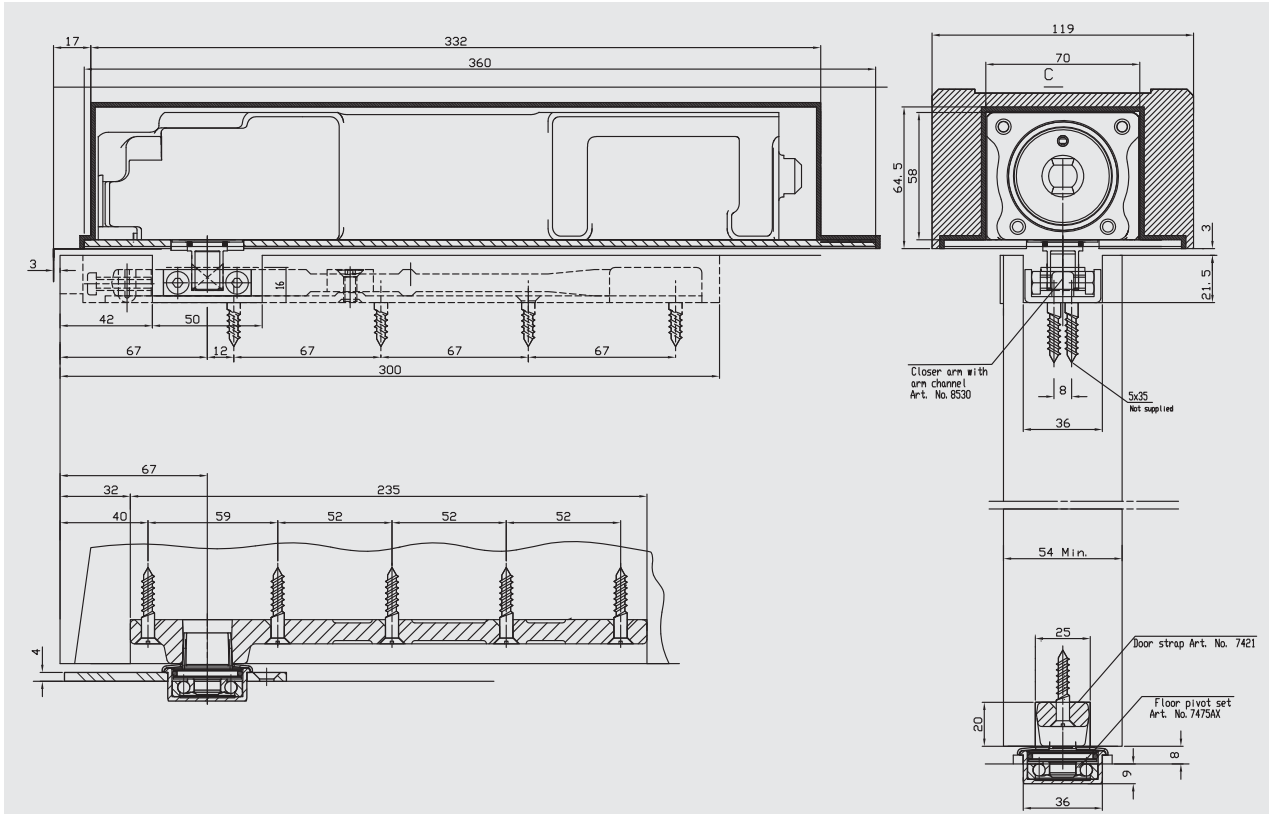


For use on Timber Fire Doors use 40FD6087RTS RTS87 Intumescent Pack (includes intumescent for Closer Body, Top Arm and Bottom Strap)

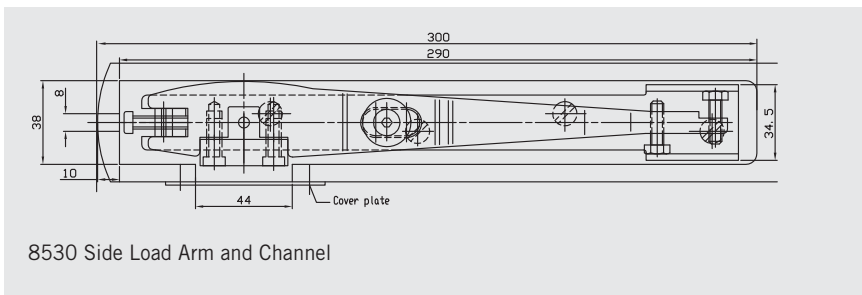


# RTS 87 TIMBER TRANSOM CLOSER

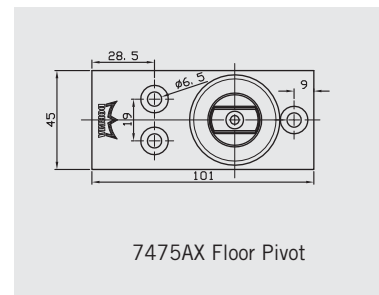
## Typical Applications



RTS 80 EMB Electro-magnetic Hold Open Transom Closer

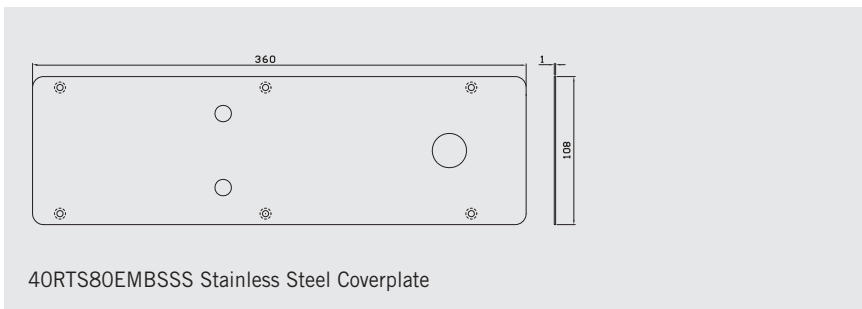


8530 Side Load Arm and Channel



7475AX Floor Pivot

For use on Timber Fire Doors use 40FD6080EMB RTS80EMB Intumescent Pack (includes intumescent for Closer Body, Top Arm and Bottom Strap)



40RTS80EMBSSS Stainless Steel Coverplate

**BJ Waller Ltd,  
20 Wilburton Road  
Stretham, Ely  
Cambridgeshire  
CB6 3LN  
Tel: 01353 647111  
Fax: 01353 648899  
Email: [sales@bjwaller.co.uk](mailto:sales@bjwaller.co.uk)  
Web: [www.bjwaller.co.uk](http://www.bjwaller.co.uk)**